

# M-AUDIO CODE 49



Bank : CC0 (MSB)  
(LSB=0)  
Prg.Ch == Prg.Ch -1

Ou (Axiom 49)

## Ketron SD4/SD1000



### Patch 05 : PRESETS de base (panneau avant), choix du Patch (SD-4XA)

- Ketron SD4, choisissez le mode « Clavier maître» (MAS),  
Port Midi IN2 :

Boutons :	No. de Prog. / Bank	Zone 1 /G (L) / (R)		Instruments :
		L	R	
<b>B1 (F10)</b>	001 / Bank 2	x	x	Grand Piano
<b>B2 (F11)</b>	002 / Bank 2	x	x	Rodes
<b>B3 (F12)</b>	005 / Bank 2	x	x	Strings
<b>B4 (F13)</b>	007 / Bank 2	x	x	Jazz Organ
<b>B5 (F14)</b>	011 / Bank 2	x	x	Musette
<b>B6 (F15)</b>	021 / Bank 2	x	x	Leslies
<b>B7 (F16)</b>	043 / Bank 2	x	x	Church
<b>B8 (F17)</b>	049 / Bank 2	x	x	Piano&Strings
<b>B9 (F18)</b>	056 / Bank 2	x	x	Jazz Bass

Zone 1
<b>F1 : ( 7 ) Channel Volume</b>
<b>F2 : ( 8 ) Balance</b>
<b>F3 : ( 1 ) Modulation</b>
<b>F4 : (70) Sound Variation</b>
<b>F5 : (71) Resonance</b>
<b>F6 : (72) Release Time</b>
<b>F7 : (73) Attack Time</b>
<b>F8 : (74) Cutoff Frequency</b>
<b>F9 : (10) Pan</b>
<b>P1 : Prog. Inc. (1-127)</b>
<b>P2 : Prog. Dec. (1-127)</b>

### Patch 10 : PRESETS de ..... , choix du Patch (SD-1XA)

- Ketron SD1000,

Boutons :	No. de Prog. / Bank	Zone 1 /G (L) / (R)		Instruments :
		L	R	
<b>B1 (F10)</b>	001 / Bank 0	x	x	Grand Piano
<b>B2 (F11)</b>	007 / Bank 10	x	x	Rodes
<b>B3 (F12)</b>	049 / Bank 0	x	x	Strings Ens.
<b>B4 (F13)</b>	018 / Bank 1	x	x	Jazz Organ
<b>B5 (F14)</b>	021 / Bank 1	x	x	French Musette
<b>B6 (F15)</b>	093 / Bank 1	x	x	Dark B3
<b>B7 (F16)</b>	020 / Bank 0	x	x	Church organ
<b>B8 (F17)</b>	081 / Bank 11	x	x	Rock Synth
<b>B9 (F18)</b>	033 / Bank 10	x	x	Bass & Guit1

Zone 1 - 4
<b>Zone 1 /G (L)+(R)</b> 001 / Bank 0 Grand Piano
<b>Zone 2 /C<sub>2</sub> (L)</b> 006 / Bank 0 El.Piano 2
<b>Zone 3 /C<sub>3</sub> (L)</b> 019 / Bank 0 Rock Organ
<b>Zone 4 /C<sub>4</sub> (L)</b> 035 / Bank 0 Picked

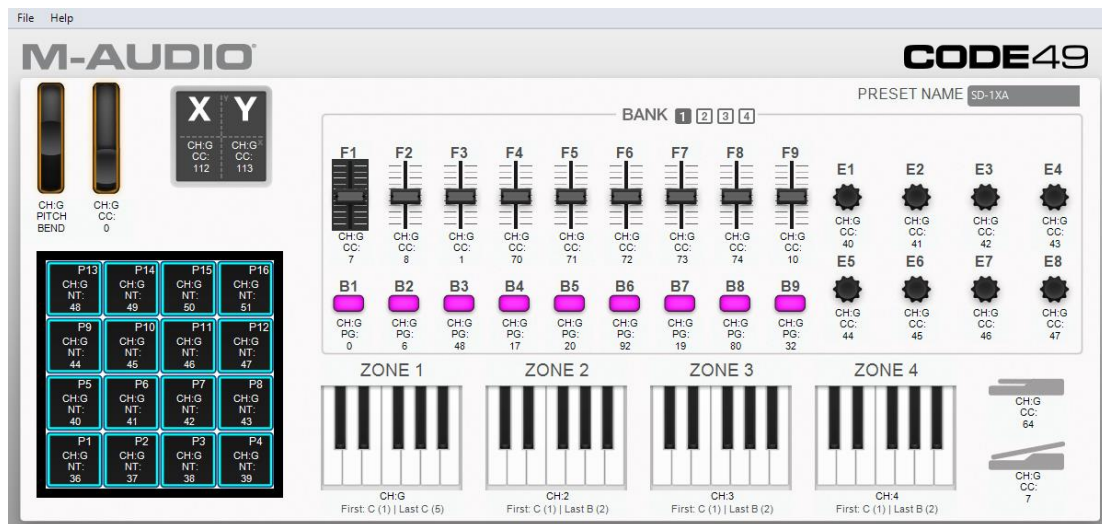


Pour éteindre le clavier, pressez 3s. le bouton ON/OFF puis relâchez...

Pour éviter les problèmes :

Il faut utiliser une alimentation externe (9 VDC, 1 A, center-positive) pour une utilisation MIDI ou, un "Hub USB" alimenté séparément pour une connexion USB à l'ordinateur.

Loading & Retrieving Presets : (M-Audio Code 49 Preset Editor)



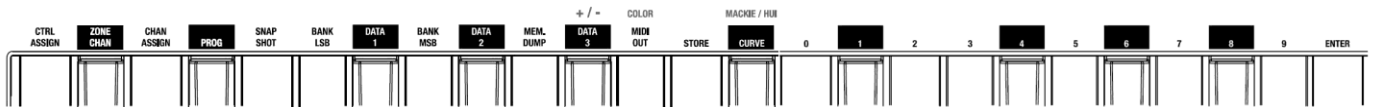
Sending Presets :

Transfer the preset from the editor to your Code 49 keyboard's internal memory.

**Note:** The current preset's name is shown in the upper-right corner of the window. This is the name that appears in your Code 49 keyboard's display when you load it. To change the name, click the field and enter a new name. Preset names can be 6 characters long and can include the following characters: **A-Z, 0-9, [ ] / \ - = \_ ' .** and spaces.

To send a preset to your connected Code 49:

1. Click **File** and then click **Send Preset**. Alternatively, press **Ctrl+Shift+S**.
2. In the window that appears, click the drop-down menu to select the desired preset number (**Preset 1-12**) or the current settings of your Code 49 (**RAM**).
3. Click **Send** to confirm your choice, or click the **X** in the upper-right corner to close the window and cancel the operation (Sending the preset will overwrite that preset number on your Code 49).



**To select a preset :** (Select Preset buttons)

Use the Preset Down/Up (**▲▼**) buttons. The current preset number will appear in the display. You can start using that preset immediately.

**To store a preset :**

1. Press **Edit** to enter Edit Mode. The button will light up.
2. Press the keyboard's **Store** key. The **display** will show **TO** and the number of the lastselected preset.
3. Use the numeric keys (**0–9**) or **Preset Down/Up** (**▲▼**) buttons to enter the desired preset number (**00–12**).
4. Press the **Enter** key. The current settings will be stored as a preset. *This will overwrite that preset.*

**To send a program change message in Edit Mode :**

1. Press **Edit** to enter Edit Mode. The **Edit** button will light up. (You can cancel this procedure at any time by pressing **Edit** to exit Edit Mode.)
2. Press the **Prog** key. The **display** will show **PRO** and the currently assigned program value.
3. Use the numeric keys (**0–9**) to enter the exact program number (**000–127**). Alternatively, use the **Preset Down/Up** (**▲▼**) buttons to scroll through the program numbers (**000–127**) (please note that this will send a program change message for each button press).
4. Press the **Enter** key.

To cancel your changes instead, press **Edit**. You will exit Edit Mode without saving anything. Remember to store the preset if you want to save your changes in that preset.

**To send a program change message in any mode :**

1. Press and hold **Shift**.
2. Use the **Preset Down/Up** (**▲▼**) buttons to move through the program change numbers. The **display** will show **PRO** and the currently selected program value (please note that this will send a program change message with each button press).
3. When the **display** shows the desired program change number, release **Shift**.

**To set a Bank LSB or Bank MSB number :**

1. Press **Edit** to enter Edit Mode. The **Edit** button will light up.
2. Press the **Bank LSB** or **Bank MSB** key. The **display** will show **LSB** or **MSB** and the LSB or MSB number.
3. Use the numeric keys (**0–9**) to enter the exact LSB or MSB number (**000–127**). Alternatively, use the **Preset Down/Up** (**▲▼**) buttons to enter the desired LSB or MSB number (**000–127**) (please note that this will send a Bank LSB or Bank MSB message with each button press).
4. Press the **Enter** key.

To cancel your changes instead, press **Edit**. You will exit Edit Mode without saving anything.

**MIDI Panic :**

Press and hold **Shift** and press **Transpose** to send a MIDI Panic message.

**MIDI Out :** Press this key to enable or disable the **MIDI Out** port. By default, this port is disabled.

**Snap Shot :**

Press this key to send out the assigned MIDI message and current position/value of **all** controls. This ensures that your software or other MIDI device matches the current positions/values of all controls on your Code Series keyboard.

**Tip:** Alternatively, press **Shift** and **Channel** simultaneously.

**To return your Code Series keyboard to its default settings :**

Press and hold both **Pad Octave –/+** buttons while powering it on. *This will overwrite its current presets.*

#### To assign a button to send a combined program, Bank LSB, and Bank MSB number (MIDI Mode) :

1. Press **Edit** to enter Edit Mode. The **Edit** button will light up.
2. Press the desired button. The button's number will appear in the **display**.
3. Press the **Ctrl Assign** key. The **display** will show **ASGN** for 1 second and then show the button's number (**B\_\_**) and a number for the type of message it sends.
4. Use the numeric keys (**0–9**) or **Preset Down/Up** (**[P]**) buttons to enter **145**.
5. Press the **Data 1** key. The **display** will show **DATA1** for 1 second and then show the button's number (**B\_\_**) and the program number it will send.
6. Use the numeric keys (**0–9**) or **Preset Down/Up** (**[P]**) buttons to enter the desired program number.
7. Press the **Data 2** key. The **display** will show **DATA2** for 1 second and then show the button's number (**B\_\_**) and the Bank LSB number it will send.
8. Use the numeric keys (**0–9**) or **Preset Down/Up** (**[P]**) buttons to enter the desired Bank LSB number.
9. Press the **Data 3** key. The **display** will show **DATA3** for 1 second and then show the button's number (**B\_\_**) and the Bank MSB number it will send.
10. Use the numeric keys (**0–9**) or **Preset Down/Up** (**[P]**) buttons to enter the desired Bank MSB number.
11. Press the **Enter** key. The button is now set to send the program number, Bank LSB number, and Bank MSB number, and you will exit Edit Mode.

To cancel your changes instead, press **Edit**. You will exit Edit Mode without saving anything.

Remember to store the preset if you want to save your changes in that preset.

#### To set the MIDI channel for a zone :

1. Press and hold **Zone** for 1 second to enter Zone Edit Mode. The active **Zone Buttons 1–4** will flash.
2. Press one of **Zone Buttons 1–4** to edit that zone. Alternatively, you can press multiple **Zone Buttons 1–4** to edit those zones simultaneously.
3. Press and hold **Shift** and then press the **Zone Chan** key. The **display** will show **CHN** and the zone's current MIDI channel.
4. Enter the desired MIDI channel by doing one of the following:
  - While holding **Shift**, use the numeric keys (**0–9**) to enter a channel (**00** or **01–16**).
  - Use the **Preset Down/Up** (**[P]**) buttons to select a channel (**00** or **01–16**).
5. While holding **Shift**, press the **Enter** key.
6. To set the MIDI channel for another zone, repeat Steps 2–5.  
To exit Zone Edit Mode, press **Zone**.

You can also assign other controls to the same MIDI channel as a keyboard zone. This does not mean the control is assigned to that zone—just that it will use the same channel.

#### To assign a control to a zone channel :

1. Press **Edit** to enter Edit Mode. The **Edit** button will light up.
2. Press or move the desired key or control. The control's number will appear in the **display**.
3. Press the **Chan Assign** key. The display will show **CHN** and then show the button's number and current MIDI channel or zone channel.
4. Use the numeric keys (**0–9**) or the **Preset Down/Up** (**[P]**) buttons to enter the desired zone (**17–20** or **z1–z4**).

**Note:** This process is the same as assigning a control to a channel. Values **00** and **01–16** correspond to Code 61's global channel and the 16 available MIDI channels. Values **17–20** correspond to channels used by **Zones 1–4 (z1–z4)**.

5. Press the **Enter** key. The button will be assigned to that channel, and you will exit Edit Mode.

To cancel your changes instead, press **Edit**. You will exit Edit Mode without saving anything.

Remember to store the preset if you want to save your changes in that preset.

#### To assign a range of keys to a zone:

1. Press and hold **Zone** for 1 second to enter Zone Edit Mode. The active **Zone Buttons 1–4** will flash.
2. Press one of **Zone Buttons 1–4** to edit that zone. Alternatively, you can press multiple **Zone Buttons 1–4** to edit those zones simultaneously. The **display** will show the zone's current lowest and highest keys (e.g., **C 1.C 5** or **Bb2.Eb4**).
3. Press the lowest key you want to assign to the zone, and then press the highest key you want to assign to the zone (or press the highest key, then the lowest). The **display** will show the note values as you enter them.
4. Press **Zone** to exit Zone Edit Mode.